



# SARAWAK

## FACTS AND FIGURES

### 2012

State Planning Unit, Chief Minister's Department

# RUKUNEGARA DECLARATION

OUR NATION, MALAYSIA, being dedicated :

- To achieving a greater unity of all her peoples ;
- To maintaining a democratic way of life ;
- To creating a just society in which the wealth of the nation shall be equitably shared ;
- To ensuring a liberal approach to her rich and diverse cultural traditions ;
- To building a progressive society which shall be oriented to modern science and technology ;

We, her peoples, pledge our united efforts to attain these ends guided by these principles :

**Belief in God**

**Loyalty to King and Country**

**Upholding the Constitution**

**Rule of Law**

**Good Behaviour and Morality**

## SARAWAK FACTS AND FIGURES

<b>CONTENTS</b>	<b>Page</b>
<b>A. BACKGROUND INFORMATION</b>	
State of Sarawak	1
Facts on Sarawak	2
Basic Statistics	3
Exchange Rates	3
State Government	4
Sarawak : Administrative Divisions and Districts	5 - 6
Sarawak : Land Use Classification, 2011	7
Sarawak : Natural Resources	8
Key Summary Statistics of Malaysia Population 2010	9
Sarawak : Population, Average Growth Rate, Area, Living Quarters & Households by District	10
Sarawak : Population by Administrative District 2000 & 2010	11
Sarawak : Population by Ethnic Group and Administrative District, 2010	12 - 13
Sarawak : Population by Age Group	14
Sarawak : Live Births, Deaths & Infant Deaths	15
Malaysia and Sarawak : Percentage Distribution of Employed Persons by Industry	16
<b>B. SARAWAK ECONOMY</b>	
Malaysia and Sarawak : Gross Domestic Product	17
Sarawak : Gross Domestic Product	18
Sarawak : External Trade	19
Sarawak : Major Export Items	20
Sarawak : Inflation (2010=100)	21
Sarawak : Capital Investment in Manufacturing Projects	22
Malaysia : Approved Manufacturing Projects (ICA) by State	23
<b>C. AGRICULTURE</b>	
Planted Area of Main Crops	24
Sarawak : Major Agriculture Production	25
Sarawak : Number of Livestock	26
Sarawak : Landing of Marine Fish by Gear Group	27
Sarawak : Production of Forest and Forest Products	28

## CONTENTS - (cont.)

<b>D. EDUCATION, HEALTH AND TOURISM</b>	
Sarawak : Education	29
Sarawak : Health Services	30
Sarawak : Visitor Arrivals by Country of Origin	31
<b>E. TRANSPORT</b>	
Malaysia and Sarawak : Road by Surface Type	32
Sarawak : Total Motor Vehicles Registered as at End of Year	33
Sarawak : Aircraft Movements at Principal Airports	34
Sarawak : Arrivals and Departures of Vessels by Port	35
Sarawak : Cargo Loaded and Discharged at Principal Ports	36
<b>F. UTILITIES AND OTHER SERVICES</b>	
Sarawak : Consumption and Production of Water	37
Sarawak : Unit Generated and Consumption of Electricity	37
Sarawak : Principal Statistics of All Professions (Private Sector)	38
Sarawak : Principal Statistics of Selected Professions	39
<b>G. FINANCE</b>	
Sarawak : Revenue and Expenditure	40
Sarawak : Import and Export Duties, Sales Tax, Excise and Service Tax	41
<b>H. SCORE</b>	
SCORE : Key Enablers	42
SCORE : 10 Priority Industries	43
SCORE : 5 Growth Nodes	44
<b>I. 10<sup>th</sup> MALAYSIA PLAN</b>	
10MP (2011 - 2015) : Sarawak Perspective	45

# BACKGROUND INFORMATION

## State of Sarawak

*Strategically located south of the booming North Asia markets...*



- **LOCATION :**  
Between latitude 0° 50' and 5°N and longitude 109° 36' and 115° 40'E
- **CLIMATE :**  
Hot and Humid equatorial monsoon climate
- **RAINFALL :**  
Mean Annual : 3,861mm
- **TEMPERATURE :**  
Daily temperature range from 33°C (90°F) in the afternoon to 22°C (70°F) during the night
- **AREA :**  
124,449.5 sq. km

## FACTS ON SARAWAK

<b>TOTAL AREA</b>	:	124,449 square kilometres
<b>LOCATION</b>	:	Between latitude 0° 50' and 5° N and longitude 109° 36' and 115° 40' E
<b>SYSTEM OF GOVERNMENT</b>	:	Parliamentary democracy with a constitutional monarch
<b>CAPITAL OF SARAWAK</b>	:	Kuching
<b>MAJOR ETHNIC GROUPS</b>	:	Malay, Iban, Chinese, Bidayuh, Melanau, Orang Ulu, Indian and other indigenous groups
<b>MAJOR LANGUAGES</b>	:	Malay, English, Mandarin, Iban, others local dialects
<b>MAJOR RELIGIONS</b>	:	Islam, Buddhism, Christian and Hindu
<b>TIME</b>	:	GMT + 8 hours US Eastern Standard Time + 13 hours
<b>CLIMATE</b>	:	Tropical : warm and sunny throughout the year. Daily temperature range from 33° C (90° F) in the afternoon to 22° C (70° F) during the night.
<b>CURRENCY</b>	:	Ringgit Malaysia (RM) which is divided in 100 cent.
<b>EXCHANGE RATE</b>	:	Pegged at US\$1 = RM3.80 on 2 September 1998. Ringgit depeg on 21 July 2005. US\$1 = RM3.09 for January - November 2012

## BASIC STATISTICS

	SARAWAK		MALAYSIA	
	2011	2012 e	2011	2012 e
Population (Million)	2.5	2.6	28.6	28.9
Labour Force (Million)	1.1	1.1	12.6	12.9
Employment (Million)	1.1	1.1	12.2	12.5
Unemployment Rate (%)	4.5	4.5	3.1	3.2
GDP Growth Rate at 2000 Constant Prices (%)	4.2	4.5	5.1	4.0 - 5.0
GDP Growth Rate at Current Prices (%)	13.9	8.8	15.0	6.3
Nominal GDP (RM Billion)	95.2	103.6	881.1	936.8
Nominal GNI (RM Billion)	n.a	n.a	859.0	917.5
Per capita income RM	37,300	39,874	29,661	31,215
Per capita income US\$	12,229	13,073	9,693	9,755
Per capita income PPP (US\$)	n.a	n.a	17,250	18,023
Balance of Trade (RM Billion)	67.2	39.4*	147.5	155.6
Exports (RM Billion)	97.9	60.2*	696.0	717.8
Imports (RM Billion)	30.3	20.8*	548.5	562.2
Inflation (% p.a)	2.6	2.1**	3.2	2.5 - 3.0
Current account of BOP (% of GNI)	n.a	n.a	11.3	12.0

Source : State Planning Unit

Department of Statistics

The Malaysian Economy in Figures 2012, Economic Planning Unit

Annual Report 2011, Bank Negara Malaysia

Notes : \* January - July      \*\* January - August

(e) estimate    (p) preliminary

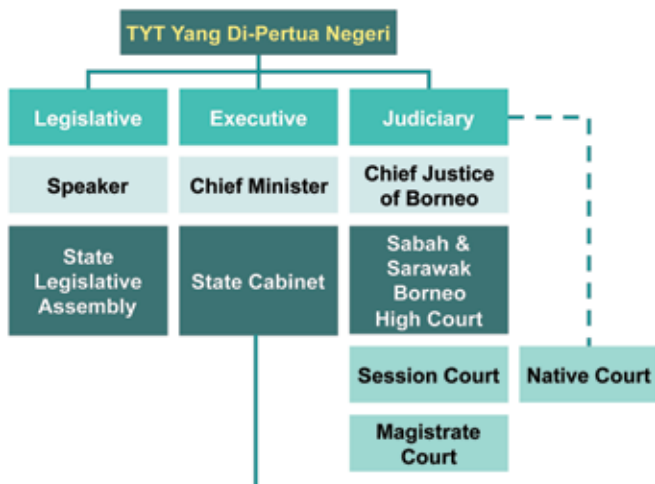
## EXCHANGE RATES

Foreign Currency	2010	2011	2012
			Jan - Aug
<b>( RM per Unit )</b>			
U.S. Dollar	3.22	3.06	3.10
Euro	4.28	4.26	3.97
Pound Sterling	4.98	4.9	4.89
Canadian Dollar	3.13	3.11	3.14
Australian Dollar	2.96	3.16	3.20
Singapore Dollar	2.36	2.43	2.46

Source : [www.bnm.gov.my](http://www.bnm.gov.my)



# STATE GOVERNMENT

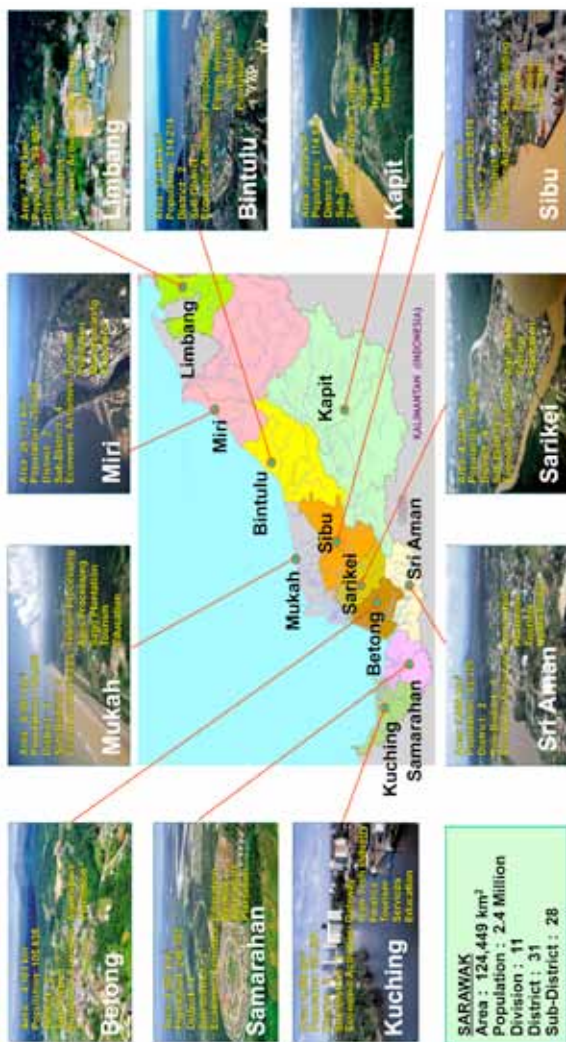


1. Ministry of Resource Planning and Environment
2. Ministry of Finance
3. Ministry of Public Utilities
4. Ministry of Rural Development
5. Ministry of Land Development
6. Ministry of Industrial Development
7. Ministry of Modernisation of Agriculture
8. Ministry of Housing
9. Ministry of Infrastructure Development and Communications
10. Ministry of Local Government and Community Development
11. Ministry of Social Development
12. Ministry of Tourism
13. Ministry of Welfare, Women and Family Development

## ADMINISTRATIVE DIVISIONS AND DISTRICTS

DIVISION	DISTRICTS	SUBDISTRICTS	DIVISION	DISTRICTS	SUBDISTRICTS
<b>KUCHING</b>	Kuching	Padawan	<b>SIBU</b>	Sibu	
	Bau			Kanowit	
	Lundu	Sematan		Selangau	
<b>SAMARAHAN</b>	Samarahan		<b>MUKAH</b>	Mukah	Balingian
	Asajaya			Dalat	Oya
	Serian	Tebedu		Daro	Belawai
	Simunjan	Sebuyau		Matu	Igan
<b>SRI AMAN</b>	Sri Aman	Lingga, Pantu	<b>BINTULU</b>	Bintulu	Sebauh
	Lubok Antu	Engkilili		Tatau	
<b>BETONG</b>	Betong	Maludam, Debak,	<b>KAPIT</b>	Kapit	Ng. Merit
		Spaoh, Pusa		Belaga	Sg. Asap
	Saratok	Kabong, Roban, Budu		Song	
<b>SARIKEI</b>	Sarikei		<b>MIRI</b>	Miri	Sibuti
	Meradong				Niah-Suai
	Julau		Marudi	Beluru, Long Lama	
	Pakan		<b>LIMBANG</b>	Limbang	Ng. Medamit
		Lawas		Sundar, Trusan	

# SARAWAK ADMINISTRATIVE



## SARAWAK : LAND USE CLASSIFICATION, 2011

CLASSIFICATION	Hectares	%
Forest	10,219,158	82.5
Forested	8,533,614	68.9
Secondary Forest	1,685,544	13.6
Agriculture	1,779,190	14.4
Settlement	265,760	2.1
Water Body	117,571	0.9
<b>TOTAL</b>	<b>12,381,679</b>	<b>100.0</b>

Source : Forest Department, Sarawak

**SARAWAK : NATURAL RESOURCES**

---

<b>1</b>	<b>Coastline</b>	<b>1,051 km</b>
<b>2</b>	<b>Land with Agriculture Potential</b>	<b>1.7 million ha</b>
<b>3</b>	<b>Land under Forest Cover</b>	<b>8.6 million ha</b>
<b>4</b>	<b>Area under Peat Soil</b>	<b>1.7 million ha</b>
<b>5</b>	<b>Marine Fish Production Potential</b>	<b>300,000 tonnes per year</b>
<b>6</b>	<b>Hydropower Potential</b>	<b>20,000 MW</b>
<b>7</b>	<b>Surface Water</b>	<b>306 billion m<sup>3</sup></b>
<b>8</b>	<b>Minerals</b>	<b>Approx. reserves</b>
	Petroleum	1,298 million barrels
	Gas	40.9 trillion S.C.F
	Coal	1,460 million tonnes
	Silica Sand	81.4 million tonnes
	Kaolin Clay	22.6 million tonnes

---

*Source : Minerals and Geoscience Department Malaysia  
Department of Marine Fisheries Sarawak  
Petroleum Nasional Berhad  
Ministry of Planning & Resource Management*

Note : (S.C.F.) Standard Cubic Feet

## KEY SUMMARY STATISTICS OF MALAYSIA POPULATION 2010

STATE	Population 2010	Average Growth 2000-2010 (%)	State Distribution (%)	Area (sq. km)	Population Density (per sq. km)	Sex Ratio
<b>SARAWAK</b>	<b>2,471,140</b>	<b>1.8</b>	<b>8.7</b>	<b>124,450</b>	<b>20</b>	<b>106</b>
Sabah	3,206,742	2.1	11.3	73,631	44	107
Pahang	1,500,817	1.5	5.3	36,137	42	113
Perak	2,352,743	1.4	8.3	21,035	112	102
Johor	3,348,283	2.0	11.8	19,210	174	112
Kelantan	1,539,601	1.6	5.4	15,099	102	101
Terengganu	1,035,977	1.4	3.7	13,035	79	104
Kedah	1,947,651	1.7	6.9	9,500	205	102
Selangor	5,462,141	2.7	19.3	8,104	674	107
Negeri Sembilan	1,021,064	1.7	3.6	6,686	153	107
Melaka	821,110	2.6	2.9	1,664	493	101
Penang	1,561,383	1.7	5.5	1,048	1,490	100
Perlis	231,541	1.2	0.8	821	282	97
F. T. of Kuala Lumpur	1,674,621	1.9	5.9	243	6,891	104
F. T. of Labuan	86,908	1.3	0.3	91	955	107
F. T. of Putrajaya	72,413	17.8	0.3	49	1,478	89
<b>MALAYSIA</b>	<b>28,334,135</b>	<b>2.0</b>	<b>100.0</b>	<b>330,803</b>	<b>86</b>	<b>106</b>

Source : *Population Distribution and Basic Demographic Characteristics, 2010*

Notes : The sex ratio is the number of males per 100 females.

Population Density is the ratio of the population to the number of square kilometres in the same area.

### SARAWAK : POPULATION, AVERAGE GROWTH RATE, AREA, LIVING QUARTERS & HOUSEHOLDS BY DISTRICT

Division / District	Population 2000	Population 2010	Population 2011e	Avg. Annual Gwth Rate (%) (2000-2011)	Area (sq. km)	Number of Living Quarters 2010	Number of Households 2010
Kuching	509,374	617,887	629,936	1.9	1,862.8	145,857	133,687
Bau	43,190	54,246	55,497	2.3	884.4	11,696	11,166
Lundu	28,070	33,413	34,000	1.7	1,812.3	8,053	7,900
<b>KUCHING DIVISION</b>	<b>580,634</b>	<b>705,546</b>	<b>719,433</b>	<b>1.9</b>	<b>4,559.5</b>	<b>165,606</b>	<b>152,753</b>
Samarahan	48,068	87,923	93,396	6.0	407.1	24,512	16,622
Serian	82,042	91,599	92,614	1.1	2,039.9	20,457	19,505
Simunjan	38,098	39,226	39,341	0.3	2,217.6	9,222	8,563
Asajaya	29,012	31,874	32,175	0.9	302.8	6,653	6,376
<b>SAMARAHAN DIVISION</b>	<b>197,220</b>	<b>250,622</b>	<b>257,526</b>	<b>2.4</b>	<b>4,967.4</b>	<b>60,844</b>	<b>51,066</b>
Sri Aman	64,475	66,790	67,026	0.4	2,323.7	16,468	15,866
Lubok Antu	23,966	27,984	28,421	1.5	3,142.6	7,086	6,790
<b>SRI AMAN DIVISION</b>	<b>88,441</b>	<b>94,774</b>	<b>95,447</b>	<b>0.7</b>	<b>5,466.3</b>	<b>23,554</b>	<b>22,656</b>
Betong	51,426	62,131	63,317	1.9	2,493.9	14,134	12,927
Saratok	43,035	46,094	46,412	0.7	1,686.9	11,292	10,112
<b>BETONG DIVISION</b>	<b>94,461</b>	<b>108,225</b>	<b>109,729</b>	<b>1.4</b>	<b>4,180.8</b>	<b>25,426</b>	<b>23,039</b>
Sarikei	59,043	58,021	57,920	-0.2	985.0	14,682	13,220
Maradong	29,917	29,441	29,394	-0.2	719.0	6,783	6,538
Julau	32,668	15,816	14,709	-7.3	1,703.4	4,517	3,820
Pakan	-	15,480	15,480	-	925.0	3,993	3,824
<b>SARIKEI DIVISION</b>	<b>121,628</b>	<b>118,758</b>	<b>117,503</b>	<b>-0.2</b>	<b>4,332.4</b>	<b>29,975</b>	<b>27,402</b>
Sibu	218,106	247,995	251,200	1.3	2,229.8	61,051	54,146
Kanowit	27,982	28,954	29,053	0.3	2,253.5	8,228	7,026
Selangau	-	22,819	22,819	-	3,795.0	6,554	5,518
<b>SIBU DIVISION</b>	<b>246,088</b>	<b>299,768</b>	<b>303,073</b>	<b>2.0</b>	<b>8,278.3</b>	<b>75,833</b>	<b>66,690</b>
Mukah	46,182	42,922	42,609	-0.7	2,536.0	10,549	8,962
Dalat	24,152	19,062	18,616	-2.4	905.3	4,409	4,175
Matu	11,498	17,369	18,100	4.1	1,600.0	3,980	3,808
Daro	15,268	30,671	32,887	7.0	1,956.3	7,088	6,961
<b>MUKAH DIVISION</b>	<b>97,100</b>	<b>110,024</b>	<b>112,212</b>	<b>1.2</b>	<b>6,997.6</b>	<b>26,206</b>	<b>23,906</b>
Bintulu	143,429	189,146	194,452	2.8	7,220.4	42,907	40,226
Tatau	23,943	30,383	31,115	2.4	4,945.8	7,277	7,063
<b>BINTULU DIVISION</b>	<b>167,372</b>	<b>219,529</b>	<b>225,568</b>	<b>2.7</b>	<b>12,166.2</b>	<b>50,184</b>	<b>47,289</b>
Kapit	58,430	56,053	55,821	-0.4	15,595.6	13,546	12,862
Song	19,806	20,595	20,676	0.4	3,935.2	4,921	4,727
Belaga	23,611	36,114	37,682	4.2	19,403.2	7,936	7,562
<b>KAPIT DIVISION</b>	<b>101,847</b>	<b>112,762</b>	<b>114,178</b>	<b>1.0</b>	<b>38,934.0</b>	<b>26,403</b>	<b>25,151</b>
Miri	228,231	300,543	308,930	2.8	4,707.1	73,939	67,598
Marudi	73,922	64,018	63,104	-1.4	22,070.0	17,329	15,046
<b>MIRI DIVISION</b>	<b>302,153</b>	<b>364,561</b>	<b>372,034</b>	<b>1.9</b>	<b>26,777.1</b>	<b>91,268</b>	<b>82,644</b>
Limbang	40,959	48,186	48,975	1.6	3,978.1	11,620	10,476
Lawas	33,603	38,385	38,899	1.3	3,811.9	8,221	7,918
<b>LIMBANG DIVISION</b>	<b>74,562</b>	<b>86,571</b>	<b>87,875</b>	<b>1.5</b>	<b>7,790.0</b>	<b>19,841</b>	<b>18,394</b>
<b>SARAWAK</b>	<b>2,071,506</b>	<b>2,471,140</b>	<b>2,514,576</b>	<b>1.8</b>	<b>124,449.5</b>	<b>594,960</b>	<b>540,990</b>

Source : *Population Distribution and Basic Demographic Characteristics, 2010*  
*Population and Housing Census of Malaysia (Preliminary Count Report), 2010*

Notes : Number of Living Quarters and Households are based on Census 2010 Preliminary Count Report.

**SARAWAK : POPULATION BY ADMINISTRATIVE DISTRICT 2000 & 2010**

Administrative District	2000			2010		
	Total	Male	Female	Total	Male	Female
<b>SARAWAK</b>	<b>2,071,506</b>	<b>1,053,076</b>	<b>1,018,430</b>	<b>2,471,140</b>	<b>1,273,112</b>	<b>1,198,028</b>
Kuching	509,374	255,982	253,392	617,887	313,442	304,445
Bau	43,190	22,292	20,898	54,246	27,903	26,343
Lundu	28,070	14,371	13,699	33,413	17,349	16,064
Samarahan	48,068	24,207	23,861	87,923	43,532	44,391
Serian	82,042	41,385	40,657	91,599	46,536	45,063
Simunjan	38,098	19,322	18,776	39,226	20,111	19,115
Asajaya	29,012	14,767	14,245	31,874	16,172	15,702
Sri Aman	64,475	32,204	32,271	66,790	33,846	32,944
Lubok Antu	23,966	11,987	11,979	27,984	13,830	14,154
Betong	51,426	25,941	25,485	62,131	31,044	31,087
Saratok	43,035	21,604	21,431	46,094	22,912	23,182
Sarikei	59,043	29,801	29,242	58,021	29,344	28,677
Maradong	29,917	14,709	15,208	29,441	14,429	15,012
Julau	32,668	16,734	15,934	15,816	7,840	7,976
Pakan	-	-	-	15,480	7,916	7,564
Sibu	218,106	109,152	108,954	247,995	127,192	120,803
Kanowit	27,982	13,693	14,289	28,954	14,125	14,829
Selangau	-	-	-	22,819	11,512	11,307
Mukah	46,182	23,831	22,351	42,922	23,460	19,462
Dalat	24,152	11,734	12,418	19,062	9,203	9,859
Matu	11,498	5,453	6,045	17,369	8,672	8,697
Daro	15,268	7,678	7,590	30,671	16,101	14,570
Bintulu	143,429	76,271	67,158	189,146	102,647	86,499
Tatau	23,943	12,640	11,303	30,383	16,101	14,282
Kapit	58,430	29,144	29,286	56,053	27,695	28,358
Song	19,806	9,885	9,921	20,595	10,295	10,300
Belaga	23,611	13,232	10,379	36,114	21,083	15,031
Miri	228,231	117,784	110,447	300,543	160,377	140,166
Marudi	73,922	38,640	35,282	64,018	33,684	30,334
Limbang	40,959	21,059	19,900	48,186	24,551	23,635
Lawas	33,603	17,574	16,029	38,385	20,208	18,177

Source : Population Distribution and Basic Demographic Characteristics, 2010



**SARAWAK : POPULATION BY ETHNIC GROUP AND  
ADMINISTRATIVE DISTRICT, 2010**

<b>Administrative District</b>	<b>Total</b>	<b>Malaysian Citizens</b>	<b>Total Bumiputera</b>	<b>Malay</b>	<b>Iban</b>	<b>Bidayuh</b>
Kuching	<b>617,887</b>	607,837	376,508	220,333	67,367	76,403
Bau	<b>54,246</b>	53,052	43,388	4,187	1,402	37,328
Lundu	<b>33,413</b>	32,033	28,248	11,467	4,438	12,034
Samarahan	<b>87,923</b>	87,180	69,634	42,123	18,676	5,957
Serian	<b>91,599</b>	89,837	80,933	11,157	14,880	54,221
Simunjan	<b>39,226</b>	38,135	36,773	20,967	15,122	358
Asajaya	<b>31,874</b>	31,665	29,554	26,632	2,625	182
Sri Aman	<b>66,790</b>	66,152	57,093	16,989	39,085	468
Lubok Antu	<b>27,984</b>	27,671	25,877	824	24,712	149
Betong	<b>62,131</b>	61,604	59,072	36,756	21,785	199
Saratok	<b>46,094</b>	45,818	42,897	18,373	24,023	220
Sarikei	<b>58,021</b>	56,753	33,835	9,501	19,175	470
Maradong	<b>29,441</b>	28,370	19,198	4,551	12,601	221
Julau	<b>15,816</b>	15,786	15,320	250	14,851	61
Pakan	<b>15,480</b>	15,426	15,083	127	14,750	28
Sibu	<b>247,995</b>	233,446	114,526	24,937	69,711	1,813
Kanowit	<b>28,954</b>	28,702	25,769	1,147	24,036	86
Selangau	<b>22,819</b>	21,875	20,830	556	19,703	97
Mukah	<b>42,922</b>	39,034	35,228	2,929	12,304	336
Dalat	<b>19,062</b>	18,807	17,497	470	1,653	53
Matu	<b>17,369</b>	16,954	16,312	639	2,776	38
Daro	<b>30,671</b>	28,683	27,887	2,360	3,733	74
Bintulu	<b>189,146</b>	160,392	127,126	20,380	75,141	2,292
Tatau	<b>30,383</b>	26,311	24,530	983	18,706	138
Kapit	<b>56,053</b>	55,390	51,329	2,093	45,970	307
Song	<b>20,595</b>	20,468	19,438	735	18,240	70
Belaga	<b>36,114</b>	30,975	29,273	912	3,983	139
Miri	<b>300,543</b>	272,617	188,768	54,688	88,385	3,865
Marudi	<b>64,018</b>	59,691	55,142	4,732	20,259	380
Limbang	<b>48,186</b>	47,088	40,068	13,225	12,224	372
Lawas	<b>38,385</b>	36,296	32,717	13,090	1,105	114
<b>Total</b>	<b>2,471,140</b>	<b>2,354,048</b>	<b>1,759,853</b>	<b>568,113</b>	<b>713,421</b>	<b>198,473</b>

**SARAWAK : POPULATION BY ETHNIC GROUP AND  
ADMINISTRATIVE DISTRICT, 2010 (CONT'D)**

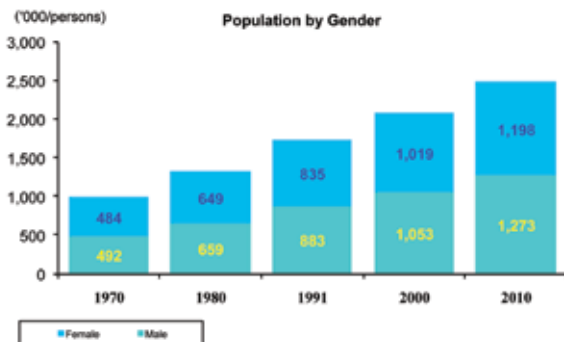
<b>Administrative District</b>	<b>Melanau</b>	<b>Other Bumiputera</b>	<b>Chinese</b>	<b>Indians</b>	<b>Others</b>	<b>Non Malaysian Citizens</b>
Kuching	3,932	8,473	225,998	3,184	2,147	10,050
Bau	91	380	9,443	132	89	1,194
Lundu	81	228	3,650	37	98	1,380
Samarahan	729	2,149	16,838	432	276	743
Serian	157	518	8,433	198	273	1,762
Simunjan	85	241	1,238	25	99	1,091
Asajaya	65	50	2,076	18	17	209
Sri Aman	158	393	8,864	73	122	638
Lubok Antu	32	160	1,677	57	60	313
Betong	151	181	2,415	34	83	527
Saratok	131	150	2,834	26	61	276
Sarikei	4,068	621	22,421	119	378	1,268
Maradong	1,535	290	8,983	95	94	1,071
Julau	62	96	443	7	16	30
Pakan	40	138	294	13	36	54
Sibu	14,612	3,453	116,958	749	1,213	14,549
Kanowit	259	241	2,800	46	87	252
Selangau	203	271	939	24	82	944
Mukah	18,241	1,418	3,655	52	99	3,888
Dalat	14,737	584	1,286	11	13	255
Matu	12,449	410	582	2	58	415
Daro	21,271	449	757	14	25	1,988
Bintulu	17,528	11,785	32,078	444	744	28,754
Tatau	1,581	3,122	1,548	40	193	4,072
Kapit	755	2,204	3,894	70	97	663
Song	162	231	930	28	72	127
Belaga	290	23,949	1,489	42	171	5,139
Miri	9,277	32,553	80,945	1,217	1,687	27,926
Marudi	278	29,493	4,184	89	276	4,327
Limbang	255	13,992	6,651	94	275	1,098
Lawas	195	18,213	3,343	39	197	2,089
<b>Total</b>	<b>123,410</b>	<b>156,436</b>	<b>577,646</b>	<b>7,411</b>	<b>9,138</b>	<b>117,092</b>

Source : Population Distribution and Basic Demographic Characteristics, 2010

## SARAWAK : POPULATION BY AGE GROUP

Age Group	1991	2000	2010
0 - 4	223,272	265,555	216,259
5 - 9	210,102	231,511	250,594
10 - 14	192,138	213,015	245,474
15 - 19	180,317	196,881	250,512
20 - 24	166,615	176,714	233,246
25 - 29	156,420	173,002	207,220
30 - 34	129,641	164,209	168,232
35 - 39	110,352	147,873	169,885
40 - 44	82,246	127,134	160,184
45 - 49	68,255	102,686	143,387
50 - 54	52,244	79,864	118,996
55 - 59	43,346	59,521	95,970
60 - 64	36,094	44,721	72,701
65 - 69	25,414	34,625	53,536
70 - 74	20,338	25,324	34,720
75+	21,586	28,871	50,224
<b>Total</b>	<b>1,718,380</b>	<b>2,071,506</b>	<b>2,471,140</b>

Source : Yearbook of Statistics Sarawak 2011  
Population Distribution and Basic Demographic Characteristics, 2010



## SARAWAK : LIVE BIRTHS AND CRUDE BIRTH RATE

Ethnic Group	2007		2008		2009 p	
	Number	Crude Rate	Number	Crude Rate	Number	Crude Rate
<b>Total</b>	<b>41,840</b>	<b>18.1</b>	<b>42,884</b>	<b>18.2</b>	<b>42,078</b>	<b>17.7</b>
Malay	10,608	20.1	11,061	20.7	11,017	20.2
Iban	11,949	17.7	12,397	18.2	12,358	17.9
Bidayuh	3,349	18.8	3,405	17.9	3,379	17.5
Melanau	2,724	21.3	2,828	21.8	2,779	21.1
Other Bumiputera	2,763	20.8	2,878	21.3	2,850	20.7
Chinese	9,126	15.4	8,856	14.8	8,304	13.7
Others *	1,321	17.1	1,459	18.5	1,391	17.4

## SARAWAK : DEATHS AND CRUDE DEATH RATE

Ethnic Group	2007		2008		2009 p	
	Number	Crude Rate	Number	Crude Rate	Number	Crude Rate
<b>Total</b>	<b>9,569</b>	<b>4.1</b>	<b>10,183</b>	<b>4.3</b>	<b>10,833</b>	<b>4.5</b>
Malay	1,892	3.6	2,021	3.8	2,209	4.1
Iban	3,144	4.7	3,449	5.1	3,517	5.1
Bidayuh	761	4.1	779	4.1	869	4.5
Melanau	695	5.5	729	5.6	758	5.8
Other Bumiputera	426	3.2	516	3.8	612	4.5
Chinese	2,522	4.3	2,571	4.3	2,734	4.5
Others *	129	1.7	118	1.5	134	1.7

## SARAWAK : INFANT DEATHS AND INFANT MORTALITY RATE

Ethnic Group	2007		2008		2009 p	
	Number	Crude Rate	Number	Crude Rate	Number	Crude Rate
<b>Total</b>	<b>248</b>	<b>5.9</b>	<b>257</b>	<b>6.0</b>	<b>299</b>	<b>7.1</b>
Malay	66	6.2	65	5.9	92	8.4
Iban	77	6.4	73	5.9	83	6.7
Bidayuh	19	5.7	23	6.8	26	7.7
Melanau	20	7.3	28	9.9	27	9.7
Other Bumiputera	12	4.3	13	4.5	18	6.3
Chinese	45	4.9	52	5.9	44	5.3
Others *	9	6.8	3	2.1	9	6.5

Source : Monthly Statistical Bulletin Sarawak, July 2012

Notes : \* Includes non-Malaysian citizens

(p) preliminary

### MALAYSIA AND SARAWAK : PERCENTAGE DISTRIBUTION OF EMPLOYED PERSONS BY INDUSTRY

Sector	2008		2009		2010	
	(%)		(%)		(%)	
	Malaysia	Sarawak	Malaysia	Sarawak	Malaysia	Sarawak
Agriculture, Forestry, Livestock and Fishing	14.0	26.3	13.5	28.2	13.3	27.9
Mining & Quarrying	0.5	1.1	0.6	1.4	0.5	1.0
Manufacturing	18.2	12.2	16.6	10.2	16.9	11.5
Construction	9.4	10.7	9.3	9.9	9.1	9.9
Electricity, Gas and Water	0.6	0.7	0.5	0.6	1.1	1.0
Wholesale and Retail Trade, Restaurants and Hotels	23.6	20.0	24.1	19.6	23.5	17.8
Transport, Storage and Communication	5.5	4.2	5.4	4.1	6.2	4.7
Financing, Insurance, Real Estate and Business Services	7.8	4.4	8.0	4.8	8.6	5.8
Community, Social, Personal Services and Other Services	20.5	20.4	21.9	21.2	20.8	20.3
<b>Total</b>	<b>100.0</b>	<b>100.0</b>	<b>100.0</b>	<b>100.0</b>	<b>100.0</b>	<b>100.0</b>
<b>Total Employed Persons</b>	<b>10,659,600</b>	<b>921,700</b>	<b>10,897,300</b>	<b>977,500</b>	<b>11,129,400</b>	<b>1,008,900</b>
<b>Total Labour Force</b>	<b>11,028,100</b>	<b>973,000</b>	<b>11,315,300</b>	<b>1,024,200</b>	<b>11,517,200</b>	<b>1,057,100</b>

Source : Malaysia Labour Force Survey Report 2010

# SARAWAK ECONOMY

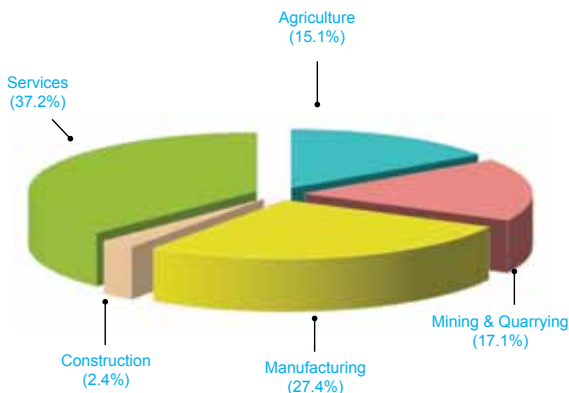
## MALAYSIA AND SARAWAK : GROSS DOMESTIC PRODUCT

	2009	2010	2011 p	2012 f
<b>MALAYSIA</b>				
GDP at Constant 2005 Prices (RM Billion)	629.9	674.9	709.3	740.9
Growth Rate (%)	-1.5	7.2	5.1	4.0 - 5.0
GDP at Current Prices (RM Billion)	712.9	795.0	881.1	936.8
Growth Rate (%)	-7.4	11.5	15.0	6.3
<b>SARAWAK</b>				
GDP at Constant 2000 Prices (RM Million)	48,601	50,805	52,927	55,292
Growth Rate (%)	-1.5	4.5	4.2	4.5
GDP at Current Prices (RM Million)	74,325	83,541	95,175	103,574
Growth Rate (%)	-14.0	12.4	13.9	8.8

Source : State Planning Unit  
*The Malaysian Economy in Figures 2012*  
 Annual Report 2011, Bank Negara Malaysia

Notes : (p) preliminary (e) estimate (f) forecast

## Sarawak : GDP Share (%) by Sector, 2012



## SARAWAK : GROSS DOMESTIC PRODUCT

Sector	2010		2011p		2012 f	
	RM Mil	% Chg	RM Mil	% Chg	RM Mil	% Chg
<b>REAL GDP (at constant 2000 prices)</b>						
Agriculture	7,929	3.8	8,192	3.3	8,374	2.2
Mining & Quarrying	9,233	4.3	9,269	0.4	9,456	2.0
Manufacturing	13,468	3.7	14,244	5.8	15,159	6.4
Construction	1,186	9.1	1,262	6.4	1,350	7.0
Services	18,729	5.0	19,641	4.9	20,557	4.7
GDP at purchasers' value	50,805	4.5	52,927	4.2	55,292	4.5
<b>NOMINAL GDP (at current prices)</b>						
Government Final Consumption	3,672	2.8	4,247	15.7	4,460	5.0
Private Final Consumption	19,055	6.3	21,979	15.3	22,870	4.1
Gross Fixed Capital Formation	9,547	7.4	9,927	4.0	10,468	5.4
Exports of Goods & Services	77,034	12.9	87,640	13.8	95,860	9.4
Less : Imports of Goods & Services	27,155	8.6	30,285	11.5	31,884	5.3
GDP at purchasers' value	83,541	12.4	95,175	13.9	103,574	8.8
<b>GDP / CAPITA</b>	<b>33,307</b>		<b>37,300</b>		<b>39,874</b>	

Source : State Planning Unit

Notes : (p) preliminary (e) estimate (f) forecast



## SARAWAK : EXTERNAL TRADE

Commodity Section (RM Million)	2009	2010	2011	2012
				(Jan - July)
EXPORTS	61,968.0	76,272.0	97,378.0	60,225.5
IMPORTS	24,273.5	26,110.4	30,285.0	20,838.6
<b>TRADE BALANCE</b>	<b>37,694.0</b>	<b>50,161.0</b>	<b>67,093.0</b>	<b>39,386.9</b>

## Exports by Commodity Section (RM Million)

<b>Total</b>	<b>61,967.3</b>	<b>76,272.0</b>	<b>97,378.0</b>	<b>60,225.5</b>
Food	510.0	668.0	845.8	499.6
Beverages and Tobacco	88.8	104.5	99.0	46.4
Crude Materials, Inedible	2,921.7	3,397.3	3,164.9	1,798.2
Mineral Fuels, Lubricants etc	44,408.8	55,881.6	73,858.7	46,012.9
Animal and Vegetable Oils and Fats	5,064.8	7,125.0	9,441.4	4,983.0
Chemicals	976.1	767.0	1,081.8	579.3
Manufactured Goods	4,792.4	5,228.0	5,846.2	3,912.1
Machinery & Transport Equipment	3,036.8	2,916.0	2,843.6	2,272.9
Miscellaneous Manufactured Articles	146.2	165.0	170.7	107.8
Other Miscellaneous	21.6	19.6	25.9	13.3

## Imports by Commodity Section (RM Million)

<b>Total</b>	<b>24,273.5</b>	<b>26,110.4</b>	<b>30,285.0</b>	<b>20,838.6</b>
Food	2,622.8	2,861.2	3,287.9	2,011.3
Beverages and Tobacco	291.8	339.7	460.1	313.4
Crude Materials, Inedible	543.6	472.7	544.6	461.2
Mineral Fuels, Lubricants, etc	3,499.7	3,730.3	4,542.2	3,597.8
Animal and Vegetable Oils & Fats	87.0	98.4	52.4	33.4
Chemicals	2,837.0	3,442.1	4,065.4	2,482.3
Manufactured Goods	4,235.5	4,158.3	4,659.0	2,786.2
Machinery and Transport Equipment	8,332.2	8,900.2	10,550.9	7,974.4
Miscellaneous Manufactured Articles	1,571.6	1,929.5	1,991.3	1,112.6
Other Miscellaneous	252.4	178.0	131.2	72.0

Source : State Planning Unit  
Monthly Statistical Bulletin, Sept 2012

## SARAWAK : MAJOR EXPORT ITEMS

Items	2009	2010	2011	2012*
<b>Rubber</b>				
Quantity ('000 kg)	26,730	33,299	38,153	15,739
Value (RM '000)	155,174	334,718	501,649	165,000
Export price (sen/kg fob)	581	1,005	1,315	1,048
<b>Black pepper</b>				
Quantity (tonne)	10,563	11,518	11,954	4,326
Value (RM '000)	105,956	142,581	208,951	90,000
Export price (RM/tonne fob)	10,076	12,379	17,480	20,804
<b>White pepper</b>				
Quantity (tonne)	2,553	2,836	2,940	995
Value (RM '000)	38,854	51,447	77,485	30,000
Export price (RM/tonne fob)	15,215	18,140	26,183	30,105.0
<b>Palm oil (crude &amp; processed)</b>				
Quantity (tonne)	2,020,070	2,435,807	2,605,405	1,295,572
Value (RM '000)	4,554,495	6,429,358	8,299,205	3,964,000
Export price (RM/tonne fob)	2,234	2,632	3,219	3,060
<b>Liquefied Natural Gas (LNG)</b>				
Quantity ('000 tonnes)	21,856	23,309	24,816	10,702
Value (RM '000)	31,195,016	38,099,139	50,256,588	26,398,000
Export price (RM/tonne fob)	1,427	1,635	2,025	2,467
<b>Crude Petroleum</b>				
Quantity ('000 tonnes)	8,385	8,087	8,268	3,742
Value (RM '000)	13,792,992	15,847,268	22,127,419	10,705,000
Export price (RM/tonne fob)	1,645	1,960	2,676	2,861
<b>Saw Logs</b>				
Quantity ('000 cu. metre)	3,667	3,839	2,999	1,279
Value (RM '000)	1,754,823	1,907,254	1,793,582	713,000
Export price (RM/cu. metre fob)	479	497	598	557
<b>Sawn Timber</b>				
Quantity ('000 cu. metre)	849	906	768	417
Value (RM '000)	781,776	819,590	705,858	1,102,000
Export price (RM/cu. metre fob)	921	905	920	951

Source : *Monthly Statistical Bulletin, July 2012*

*Sarawak External Trade Statistics, 2012 (Tables & Summaries)*

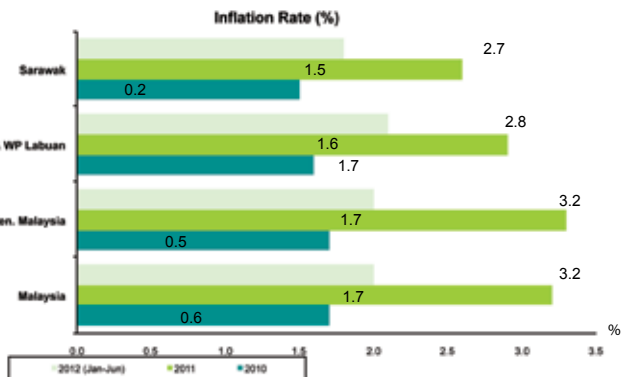
Note : \* Refer to Jan - Ju 2012

## INFLATION ( 2010=100 )

Commodity Section	2010	2011	2012*
<b>INFLATION</b>	<b>1.5</b>	<b>2.6</b>	<b>1.8</b>
Food & Non-Alcoholic Beverages	1.8	3.3	3.9
Alcoholic Beverages and Tobacco	3.2	3.7	0.1
Clothing and Footwear	-3.5	-0.9	-0.8
Housing, Water, Electricity, Gas and Other Fuels	1.3	2.3	1.1
Furnishings, Household Equipment and Routine Household Maintenance	0.5	0.8	1.0
Health	2.6	3.3	2.6
Transport	1.6	4.4	0.0
Communication	-0.4	-0.1	-0.4
Recreation Services and Culture	1.5	0.7	-1.2
Education	1.5	1.6	0.3
Restaurants and Hotels	0.7	5	1.9
Miscellaneous Goods and Services	2.6	1.3	1.9
Durable Goods	1.1	0.4	-0.8
Semi-Durable Goods	-2.2	-0.2	-0.3
Non-Durable Goods	1.9	3.3	2.4
Services	1.4	2.6	1.7

Source : Malaysia Consumer Price Index, August 2012

Note : \* Refer to 2011 - July 2012



**SARAWAK : CAPITAL INVESTMENT IN MANUFACTURING PROJECTS**

<b>Manufacturing Projects</b>	<b>2009</b>	<b>2010</b>	<b>2011</b>	<b>2012*</b>
<i>( RM Million )</i>				
DOMESTIC	1,598	4,046	1,356	3,182
FOREIGN	9,936	6,139	1,783	6,535
<b>TOTAL</b>	<b>11,534</b>	<b>10,185</b>	<b>3,139</b>	<b>9,717</b>

**Approved Capital Investment**

<b>Commodity Section</b>	<b>2009</b>	<b>2010</b>	<b>2011</b>	<b>2012*</b>
<i>( RM Million )</i>				
Food	255	1,704	4	168
Beverages	4	4	0	0
Wood Based & Rattan Products	122	265	87	20
Printing, Publishing & Allied Industries	0	0	10	0
Basic Metal Product	154	4,193	1,259	1,057
Chemical & Chemical Products	331	2,630	1,347	7,732
Petroleum & Other Related Products	9,832	357	230	32
Non Metallic Mineral Products	753	11	17	220
Electrical Machinery, Appliances & Supplies	34	762	0	42
Transport Equipment	31	218	120	121
Textiles & Garments	0	6	0	0
Rubber Products	1	23	5	3
Renewable Energy Products	0	0	2	55
Services	0	0	23	251
Miscellaneous Manufacturing Industry	17	12	35	16
<b>Total Capital Investment</b>	<b>11,534</b>	<b>10,185</b>	<b>3,139</b>	<b>9,717</b>

Source : Ministry of Industrial Development

Note : Projects approved under ICC and projects supported under ICA

\* Refer to Jan-Sept 2012

**MALAYSIA : APPROVED MANUFACTURING PROJECTS (ICA) BY STATE**

State	2010		2011		2012 (Jan - Sept)	
	Number	Total Capital Investment (RM Million)	Number	Total Capital Investment (RM Million)	Number	Total Capital Investment (RM Million)
Selangor	325	10,642	263	8,741	106	7,685
Johor	172	7,465	188	6,585	72	4,275
Penang	128	12,238	109	9,106	37	1,904
Pahang	13	1,039	25	3,038	8	777
Kedah	49	1,961	42	6,136	13	374
Perak	49	3,040	30	985	21	1,931
Sabah	39	1,326	27	921	15	4,841
Melaka	37	1,631	39	4,364	13	482
<b>Sarawak</b>	<b>43</b>	<b>3,945</b>	<b>43</b>	<b>8,453</b>	<b>30</b>	<b>9,649</b>
Negeri Sembilan	35	1,293	38	5,905	15	2,291
Terengganu	9	2,328	15	1,393	7	2,360
F. T. of Kuala Lumpur	4	55	19	308	8	181
Kelantan	5	170	5	129	2	25
Perlis	1	31	3	23	-	-
F. T. of Labuan	1	15	-	-	1	115
<b>Total</b>	<b>910</b>	<b>47,177</b>	<b>846</b>	<b>56,087</b>	<b>348</b>	<b>36,890</b>

Source : [www.mida.gov.my](http://www.mida.gov.my)

# AGRICULTURE

## PLANTED AREA OF MAIN CROPS

<b>MALAYSIA</b>	<b>2008</b>	<b>2009</b>	<b>2010</b>	<b>2011</b>
<i>('000 Hectares)</i>				
Oil Palm	4,487.9	4,691.1	4,853.8	4,976.0
Cocoa	20.9	19.3	20.8	20.2
Rubber	1,247	1,008.6	999.3	n.a
Paddy (Wet & Dry/Hill)	656.4	674.8	673.8	683.7
<b>SARAWAK</b>	<b>2008</b>	<b>2009</b>	<b>2010</b>	<b>2011</b>
<i>('000 Hectares)</i>				
Oil Palm	744.4	839.7	919.4	1,021.6
Cocoa	5.5	6.3	8.4	8.5
Rubber	157.1	157.2	159.0	160.3
Paddy (Wet & Dry/Hill)	115.9	119.0	122.7	127.0
Pepper	11.3	10.9	14.0	15.0
<b>SABAH</b>	<b>2008</b>	<b>2009</b>	<b>2010</b>	<b>2011</b>
<i>('000 Hectares)</i>				
Oil Palm	1,330.4	1,383.6	1,409.7	1,424.0
Cocoa	8.4	7.2	7.5	7.4
Rubber	75.1	75.0	94.7	n.a
Paddy (Wet & Dry/Hill)	38.9	43.6	40.6	n.a

Source : *Monthly Statistical Bulletin Malaysia, Sept 2011*  
*Yearbook of Statistics Sarawak 2011*  
*Yearbook of Statistics Sabah 2011*  
*Malaysian Palm Oil Board Website*  
*Malaysian Cocoa Board Website*  
*Malaysian Rubber Board Website*  
*Department of Agriculture Website*  
*State Planning Unit*

Note : n.a not available

## SARAWAK : MAJOR AGRICULTURE PRODUCTION

Commodity	2009	2010	2011	2012
				Jan - July
Crude Palm Oil ('000 tonnes)	1,994.8	2,179.5	2,696.2	1,462.6
Cocoa Beans (raw/roasted) ('000 tonnes)	1.4	1.5	0.8	0.5
Rubber ('000 tonnes) *	26.7	33.3	38.2	17.2
Pepper (White & Black) ('000 tonnes)	21.9	24.0	17.0**	12.1***

Source : *Yearbook of Statistics Sarawak 2011*  
*Monthly Statistical Bulletin Sarawak, Sept 2012*

Notes : \* Refer to exports  
 \*\* Refer to Jan-Jun 2011  
 \*\*\* Refer to Black Pepper only



## SARAWAK : NUMBER OF LIVESTOCK

Selected Livestock	2010	2011	2012
			(Jan - Sept)
<b>Cattle</b>			
Population	27,518	27,615	27,652
Recorded Slaughter	853	384	209
<b>Buffaloes</b>			
Population	4,060	4,138	4,205
Recorded Slaughter	30	n.a	n.a
<b>Goats</b>			
Population	16,317	16,140	15,988
Recorded Slaughter	152	212	138
<b>Sheep</b>			
Population	12,565	12,814	13,043
Recorded Slaughter	36	n.a	n.a
<b>Swine</b>			
Population	1,505,772	1,500,432	1,495,160
Recorded Slaughter	223,663	218,158	94,334

Source : Yearbook of Statistics Sarawak 2011  
 Department of Agriculture Sarawak

Notes : n.a not available

## SARAWAK : LANDING OF MARINE FISH BY GEAR GROUP

Gear Group	2009	2010	2011	2012
				Jan - July
<b>(Tonne)</b>				
Trawl Nets	73,999	62,002	57,289	38,245
Drift/Gill Nets	29,207	36,083	37,173	19,857
Bag Nets	4,229	3,930	3,068	1,706
Push/Scoop Lift Nets	341	196	221	271
Hooks and Lines	2,145	2,145	2,874	2,145
Others	15,184	13,339	11,324	10,903
<b>TOTAL</b>	<b>125,105</b>	<b>117,695</b>	<b>111,949</b>	<b>73,127</b>

Source : Monthly Statistical Bulletin Sarawak, Sept 2012

**SARAWAK : PRODUCTION OF FOREST AND FOREST PRODUCTS**

Particulars	2009	2010	2011	2012
				Jan - July
Saw Logs ('000 m <sup>3</sup> )	10,368	10,152	9,609	4,809
Sawn Timber ('000 m <sup>3</sup> )	1,067	1,300	914	419
Plywood ('000 m <sup>3</sup> )	2,764	2,816	2,732	640
Laminated Boards ('000 m <sup>3</sup> )	29	42	36	7
Mouldings / Dowels ('000 m <sup>3</sup> )	14	19	11	3
Woodchips ('000 tonnes)	203	349	358	102
Veneer ('000 m <sup>3</sup> )	674	621	680	134
Particle Board ('000 m <sup>3</sup> )	133	133	133	31
Medium Density Fibreboard ('000 m <sup>3</sup> )	238	249	235	62
Poles ('000)	2,856	2,873	2,962	0
Cordwood ('000 tonne)	170	70	148	81
Charcoal (tonne)	35	29	608	250

Source : *Yearbook of Statistics Sarawak 2011*  
*Monthly Statistical Bulletin Sarawak, Sept 2012*  
*Sarawak Timber Industry Development Corporation (STIDC)*

# EDUCATION, HEALTH AND TOURISM

## SARAWAK : EDUCATION

Particulars	2008	2009	2010	2011
<b>Total Number of Students</b>	<b>513,187</b>	<b>513,523</b>	<b>507,108</b>	<b>495,034</b>
Primary School Enrolment	295,976	293,218	289,930	288,863
Secondary School Enrolment	212,772	216,232	214,053	202,949
Technical Secondary School	4,439	4,073	3,125	3,222
<b>Total Number of Teachers</b>	<b>34,990</b>	<b>39,773</b>	<b>41,181</b>	<b>40,058</b>
Teachers in Primary School	20,910	24,303	25,173	24,721
Teachers in Secondary School	13,545	14,893	15,436	14,765
Technical Secondary School	535	577	572	572
<b>Total Number of Schools</b>	<b>1,463</b>	<b>1,469</b>	<b>1,463</b>	<b>1,469</b>
Primary Schools	1,269	1,273	1,269	1,273
Secondary Schools	187	189	187	189
Technical Secondary School	7	7	7	7

Source : Yearbook of Statistics Sarawak 2011

**SARAWAK : HEALTH SERVICES**

<b>Health Services</b>	<b>2007</b>	<b>2008</b>	<b>2009</b>	<b>2010</b>
Hospital *	22	22	22	22
Health Clinic, Rural Clinic, Maternal & Child Health Clinic, Mobile Clinic and Dental Clinic	536	509	510	500
Number of Beds	4,882	4,900	4,759	4,918
Doctors	1,084	1,126	1,205	1,388
Nurses	2,479	2,664	2,956	3,231
Dentists	150	168	194	204

Source : *Yearbook of Statistics Sarawak 2011*

Note : \* Including Sentosa Hospital & Rajah Charles Brooke Memorial Hospital.

**SARAWAK : VISITOR ARRIVALS BY COUNTRY OF ORIGIN**

Country	2009	2010	2011		2012 (Jan - Jun)	
			Number	% Share	Number	% Share
Brunei	1,203,919	1,188,120	1,553,523	24.4	854,134	25.7
Singapore	50,243	38,743	45,986	0.7	27,495	0.8
Thailand	19,328	15,493	18,130	0.3	16,700	0.5
Indonesia	499,004	383,710	415,267	6.5	193,921	5.8
Philippines	106,237	70,770	77,652	1.2	54,074	1.6
Japan	9,763	9,475	10,249	0.2	7,229	0.2
Taiwan	7,986	6,778	8,743	0.1	4,169	0.1
Hong Kong	544	475	397	0.0	115	0.0
China	38,477	34,388	35,309	0.6	21,205	0.6
India	21,833	16,533	22,116	0.3	15,153	0.5
United Kingdom & Ireland	36,862	29,436	29,672	0.5	16,171	0.5
Eastern & Western Europe	40,418	32,357	40,282	0.6	19,572	0.6
USA	11,500	9,007	10,759	0.2	6,427	0.2
Canada	7,483	5,938	7,354	0.1	4,485	0.1
Australia & New Zealand	27,272	22,255	24,848	0.4	14,022	0.4
Others	36,579	34,462	42,949	0.7	23,259	0.7
Malaysia	3,063,778	3,328,734	4,022,593	63.2	2,040,132	61.5
<b>Total</b>	<b>5,181,226</b>	<b>5,226,674</b>	<b>6,365,829</b>	<b>100.0</b>	<b>3,318,263</b>	<b>100.0</b>

Source : *Monthly Statistical Bulletin Sarawak, July 2012*

# TRANSPORT



## MALAYSIA AND SARAWAK : ROAD BY SURFACE TYPE

Type	2008		2009		2010	
	Km.	Share (%)	Km.	Share (%)	Km.	Share (%)
<b>MALAYSIA (330,803 Sq. Km)</b>						
Paved	98,015	79.9	109,374	80.9	116,169	80.4
Gravel	16,373	13.3	16,806	12.4	18,480	12.8
Earth	8,280	6.7	9,046	6.7	9,754	6.8
<b>Total</b>	<b>122,668</b>	<b>100.0</b>	<b>135,226</b>	<b>100.0</b>	<b>144,403</b>	<b>100.0</b>
<b>SARAWAK (124,449 Sq. Km)</b>						
Paved	12,995	76.9	13,727	79.1	13,829	77.4
Gravel	3,408	20.2	3,170	18.3	3,511	19.7
Earth	503	3.0	465	2.7	521	2.9
<b>Total</b>	<b>16,906</b>	<b>100.0</b>	<b>17,362</b>	<b>100.0</b>	<b>17,861</b>	<b>100.0</b>

Source : Yearbook of Statistics Malaysia 2011  
Yearbook of Statistics Sarawak 2011

**SARAWAK : TOTAL MOTOR VEHICLES REGISTERED  
AS AT END OF YEAR**

Type	2008	2009	2010	2011
Motor Cars	463,030	492,101	586,316	629,560
Motorcycles	512,848	542,653	547,997	590,967
Taxi, Hire and Drive Cars	6,123	6,230	2,783	2,994
Buses	2,673	2,759	3,145	3,195
Goods Vehicles	60,212	63,461	74,002	77,497
Others	122,958	132,342	55,425	58,943
<b>Total</b>	<b>1,167,844</b>	<b>1,239,546</b>	<b>1,269,668</b>	<b>1,363,156</b>

Source : *Monthly Statistical Bulletin Sarawak, Sept 2012*

**SARAWAK : AIRCRAFT MOVEMENTS AT PRINCIPAL AIRPORTS**

Airports	2009	2010	2011	2012
				Jan - July
Kuching	45,012	46,171	51,763	27,389
Sibu	8,578	18,899	18,772	10,204
Miri	41,016	41,176	43,036	26,015
Bintulu	10,983	11,232	11,377	6,001
<b>Total</b>	<b>105,589</b>	<b>117,478</b>	<b>124,948</b>	<b>69,609</b>

Source : *Monthly Statistical Bulletin Sarawak, Sept 2012*

Note : (p) preliminary

## SARAWAK : ARRIVALS AND DEPARTURES OF VESSELS BY PORT

Ports	2010		2011		2012	
					Jan - July	
	Arrivals	Departures	Arrivals	Departures	Arrivals	Departures
<b>Kuching</b>						
Number	3,827	3,827	3,528	3,528	2,193	2,193
'000 N.R.T.	4,615	4,615	4,642	4,642	3,009	3,009
<b>Rajang</b>						
Number	2,820	2,820	2,661	2,781	1,631	1,631
'000 N.R.T.	4,300	4,300	3,928	4,048	2,565	2,564
<b>Bintulu</b>						
Number	5,060	5,060	4,364	4,564	2,612	2,612
'000 N.R.T.	22,357	22,357	20,263	20,263	10,930	10,930
<b>Miri</b>						
Number	2,489	2,489	2,576	2,576	1,603	1,603
'000 N.R.T.	3,624	3,624	3,342	3,342	1,852	1,852
<b>Others</b>						
Number	916	892	738	736	318	314
'000 N.R.T.	230	226	195	196	85	82
<b>Total</b>						
Number	15,112	15,088	13,867	14,185	8,357	8,353
'000 N.R.T.	35,126	35,122	32,370	32,491	18,441	18,437

Source : Monthly Statistical Bulletin Sarawak, July 2012

Notes : (N.R.T.) Net Registered Tonnes

**SARAWAK : CARGO LOADED AND DISCHARGED AT PRINCIPAL PORTS**

<b>Port Authority</b>	<b>2008</b>	<b>2009</b>	<b>2010</b>	<b>2011</b>
<i>( '000 freight tonnes )</i>				
<b>Loaded</b>	<b>47,377</b>	<b>43,862</b>	<b>46,375</b>	<b>46,639</b>
Kuching	2,140	1,317	2,145	2,147
Rajang	3,404	3,193	3,448	3,102
Bintulu	35,871	34,324	35,404	36,473
Miri	5,962	5,028	5,378	4,917
<b>Discharged</b>	<b>12,275</b>	<b>11,450</b>	<b>13,192</b>	<b>14,069</b>
Kuching	5,410	5,175	6,069	6,533
Rajang	1,603	1,546	1,610	1,747
Bintulu	4,598	4,120	4,772	4,929
Miri	664	609	741	860
<b>Total</b>	<b>59,652</b>	<b>55,312</b>	<b>59,567</b>	<b>60,708</b>

Source : *Monthly Statistical Bulletin Sarawak, Sept 2012*

# UTILITIES AND OTHER SERVICES

**SARAWAK : CONSUMPTION AND PRODUCTION OF WATER**

Particulars	2009	2010	2011	2012
				Jan - July
Production ('000 cu. metres)	330,998	354,692	376,649	225,368
Consumption ('000 cu. metres)	238,188	264,199	270,820	166,295

**SARAWAK : UNIT GENERATED AND CONSUMPTION OF ELECTRICITY**

Particulars	2009	2010	2011	2012
				Jan - July
Unit Generated (million KWH)	7,203.0	8,090.0	8,946.0	5,662.0
Consumption (million KWH)	5,844.0	6,752.0	7,720.0	4,960.0
Installed Capacity (MW)	1,230.3	1,972.9	2,862.7 *	n.a

Source : *Yearbook of Statistics Sarawak, 2011*  
*Monthly Statistical Bulletin Sarawak, Sept 2012*  
 Ministry of Public Utilities

Notes : n.a not available

\* January - April

**SARAWAK : PRINCIPAL STATISTICS OF ALL PROFESSIONS \*  
(PRIVATE SECTOR)**

<b>Professions</b>	<b>2002</b>	<b>2003</b>	<b>2005</b>	<b>2007</b>
No. of Establishments	912	970	993	793
Revenue (RM '000)	497,074	562,886	586,111	660,908
Expenditure (RM '000)	384,496	433,806	451,627	527,174
Salaries and wages paid (RM '000)	158,039	181,928	190,201	200,936
Value of fixed assets owned (RM '000)	110,158	111,566	125,721	203,794

Source : *Yearbook of Statistics Sarawak 2011*

Notes : \* Includes engineers, accountants, architects, building draughtsman, dentists, lawyers, doctors, surveyors and veterinary surgeons in the private sector.  
No census / survey was conducted for the years 2004, 2006 and 2008.



**SARAWAK : PRINCIPAL STATISTICS OF SELECTED PROFESSIONS**

<b>Profession</b>	<b>2003</b>	<b>2004</b>	<b>2005</b>	<b>2007</b>
<b>Real Estates</b>				
No. of Establishments	13	13	12	13
Revenue (RM '000)	1,230	1,399	1,425	1,743
Expenditure (RM '000)	779	883	795	1,299
Salaries and wages paid (RM '000)	234	281	438	626
Value of fixed assets owned (RM '000)	1,344	1,673	1,638	1,679
<b>Profession</b>	<b>2004</b>	<b>2005</b>	<b>2006</b>	<b>2008</b>
<b>Travel Agencies and Tour Operators</b>				
No. of Establishments	104	99	107	102
Revenue (RM '000)	118,562	165,483	136,963	155,234
Expenditure (RM '000)	113,158	140,138	103,141	143,870
Salaries and wages paid (RM '000)	17,391	19,040	20,661	22,385
Value of fixed assets owned (RM '000)	17,027	18,260	21,951	25,276
<b>Profession</b>	<b>2006</b>	<b>2007</b>	<b>2008</b>	<b>2009p</b>
<b>Hotels and Lodgings</b>				
No. of Establishments	278	288	277	285
Revenue (RM '000)	361,983	386,010	406,777	440.71
Expenditure (RM '000)	163,587	343,254	356,015	184.19
Salaries and wages paid (RM '000)	78,703	80,623	86,831	91,807
Value of fixed assets owned (RM '000)	1,407,530	1,306,365	1,318,272	1,606.22

Source : Yearbook of Statistics Sarawak 2011

Note : (p) preliminary

# FINANCE

## SARAWAK : REVENUE AND EXPENDITURE

Revenue / Expenditure	2008	2009	2010	2011
<i>( RM Million )</i>				
<b>State</b>				
Revenue	6,461	4,563	5,607	4,136
Operating Expenditure	4,345	3,648	3,389	3,945
Development Revenue	3,645	2,798	2,763	3,112
Development Expenditure	2,553	2,834	2,490	3,630
<b>Federal</b>				
Revenue	5,832	1,339	3,469	2,003*
Operating Expenditure	5,116	8,440	8,129	3,256*
Development Expenditure	971	978	1,053	257*

Source : Yearbook of Statistics Sarawak 2011  
 Estimate of Revenue and Expenditure For the Year 2011, Sarawak

Notes : \* refer to Jan - Jun 2011

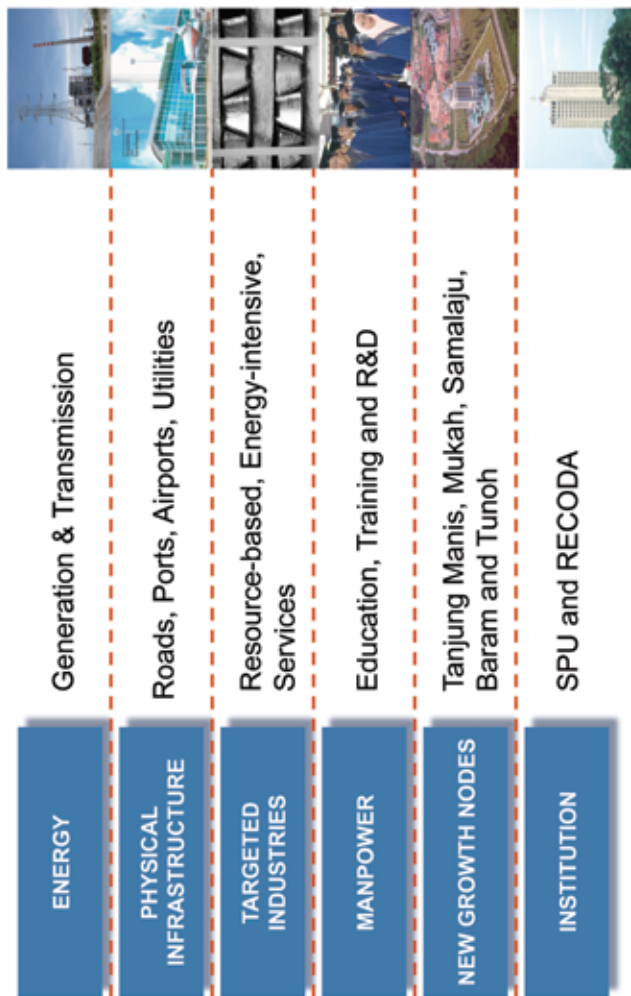
**SARAWAK : IMPORT AND EXPORT DUTIES, SALES TAX,  
EXCISE AND SERVICE TAX**

Items	2007	2008	2009	2010
				Jan - June
<b>( RM '000 )</b>				
<b>State</b>				
Import Duties	-	-	-	-
Export Duties	194	12	25	40
Excise	-	-	-	-
<b>Federal</b>				
Import Duties	72,947	84,198	64,235	38,222
Export Duties	749,100	1,028,008	399,592	248,284
Sales Tax	128,516	187,702	120,279	71,054
Excise	110,541	142,846	117,319	77,513
Service Tax	66,525	71,652	73,349	40,643

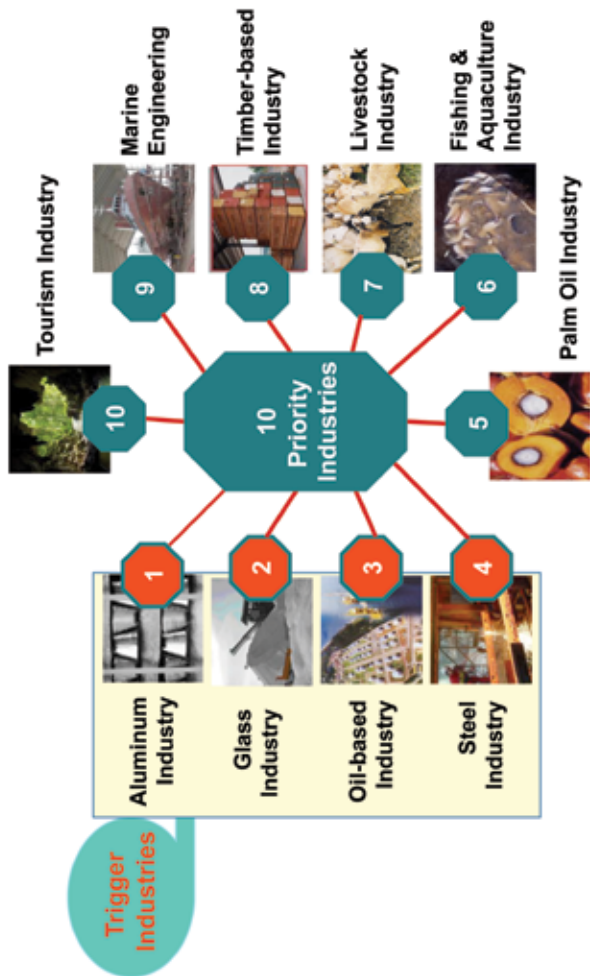
Source : Yearbook of Statistics Sarawak 2011

**SCORE**

## SCORE : Key Enablers



## SCORE : 10 Priority Industries







# 10<sup>TH</sup> MALAYSIA PLAN

# 10MP (2011-2015): Sarawak Perspective

## Goal

Towards A High Income and Advanced Economy

### Strategic Thrusts

To Create  
New  
Sources  
of Wealth

To Move  
The  
Economy  
Up The  
Value  
Chain

To intensify  
and accelerate  
growth for  
SCORE as well  
as the  
development  
outside SCORE

To leverage  
on energy  
and natural  
resources

To speed up  
development  
in the rural  
areas

To prepare  
Sarawak's  
human  
capital as  
the  
catalyst of  
growth

To enhance  
the  
quality of  
life

### Strategic Objectives

High Economic Growth

Sustainable Development

Balanced Regional Development

Knowledge Society

Good Quality of Life

Development with Equitable Distribution

# *Notes*